

DRIVING TESTS AT HALFORDS!

DSA is to start offering car driving tests at selected branches of Halfords from this Autumn. Should be really useful if you find one of your brake lights out when you arrive for test! More information available on this link: <http://www.dft.gov.uk/news/press-releases/dsa-press-20120710a/>



OLDER PEDESTRIANS UNABLE TO CROSS THE ROAD IN TIME

Did you know that you are required to walk at 1.2 metres per second in order to cross at a pedestrian crossing safely in the UK. A recent study by UCL has found that a majority of over 65's can only cross at 0.9 metres per second and so cannot cross safely in time.

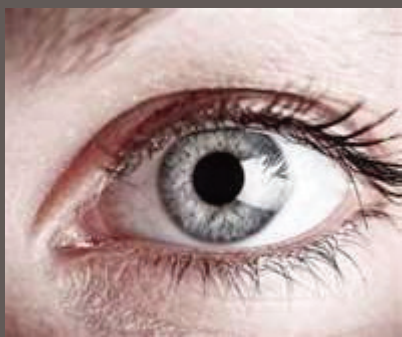
EU Driving Instructors



Apparently, if you qualify as a driving instructor in another EU country you can transfer your registration to this country once you have a British counterpart driving licence. I presume that this works the same if a UK driving instructor wants to work in another EU country?

PRIVATE WHEEL CLAMPING TO BE BANNED

From 1/10/12 it will be illegal to clamp, tow away or immobilise a vehicle without lawful authority to do so. In effect, this will ban most clamping and towing by anyone other than the police, local authorities, government agencies such as the DVLA & VOSA.



DRIVING EYESIGHT REQUIREMENTS

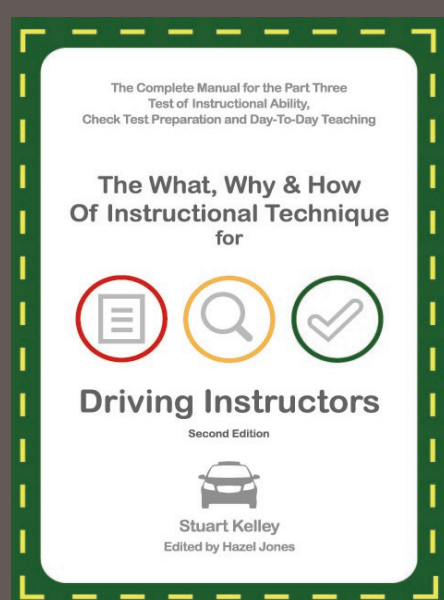
Do you know the rules? Click on this link for more information:

http://www.direct.gov.uk/en/Motoring/LearnerAndNewDrivers/LearningToDriveOrRide/DG_4022529

YOUNG DRIVERS AT RISK

An AA charitable trust report has concluded that 40% of drivers have a crash by the time they are 23 years of age. Analysis of these drivers' first crashes shows:

- 23% of 18 -24 year olds had crashed within six months of passing their test
- 28% had crashed by the time they were 21 years of age
- First crashes are most likely to happen in the day time – only 13% happen at night
- Most people have their first accident without passengers in the car (63%)
- Bad weather was a factor in 15% of first accidents
- 47% had their first crash on a single carriageway or in a rural area
- 5% of drivers had their first crash on a motorbike



**Only £27.00
+ £2.00 p&p**

To order on-line go to:
www.instructordoctors.co.uk
For more information email at:
Info@instructordoctors.co.uk

Or Call:
01895 253472

Over 400 pages containing:

- Recap questions
- Full Briefings
- Talkthrough Routines
- Q&A Technique
- Core Competencies
- Check test preparation

+ New Sections on:

- Pass Plus
- Roundabouts
- Hill Starts
- In-car Hazard Perception
- Tips and Techniques
- Introduction to coaching

& much more.....

GRADE 6

Hazel and I both had our check tests recently and I am pleased to announce that we both retained our grade 6 status

ILLEGAL INSTRUCTION

DSA's Fraud and Integrity unit concluded over 300 cases of illegal instruction over the past 12 months.

CAR TEST PASS RATES

The practical car test pass rate has increased to almost 47%, up from 44% in 2007/8.

LESS PART 3 TESTS

The number of part 3 qualifying tests taken has fallen by 26% in the last 2 years. The national pass rate remains at 30%.